

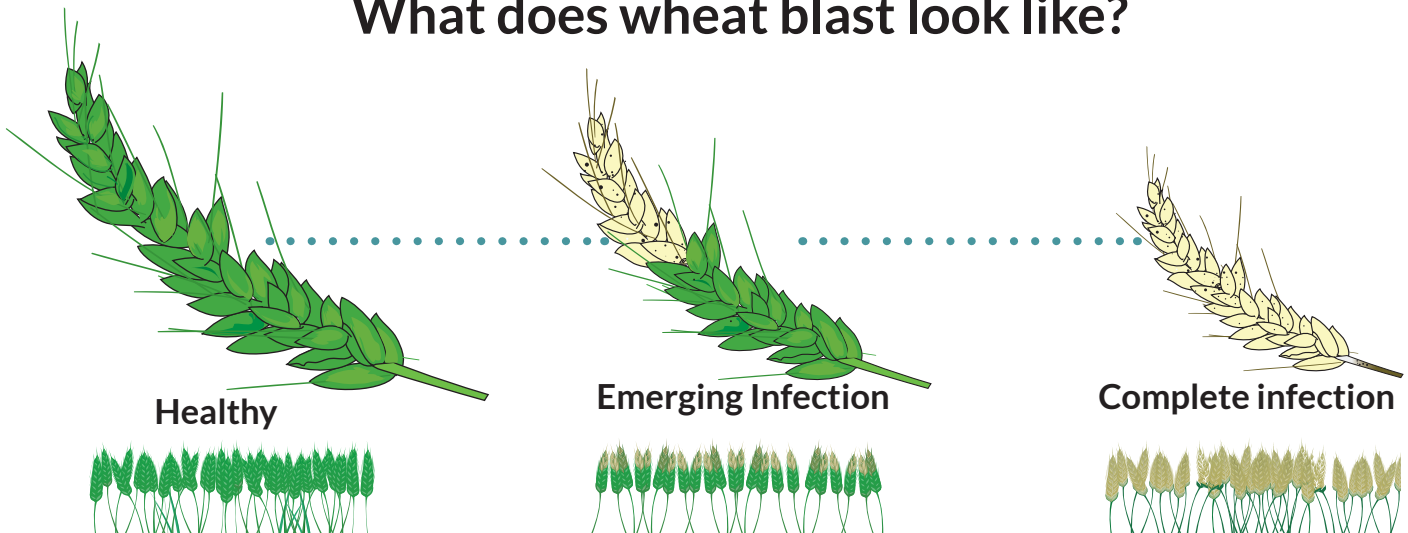
# What is wheat blast disease? How can I manage it?



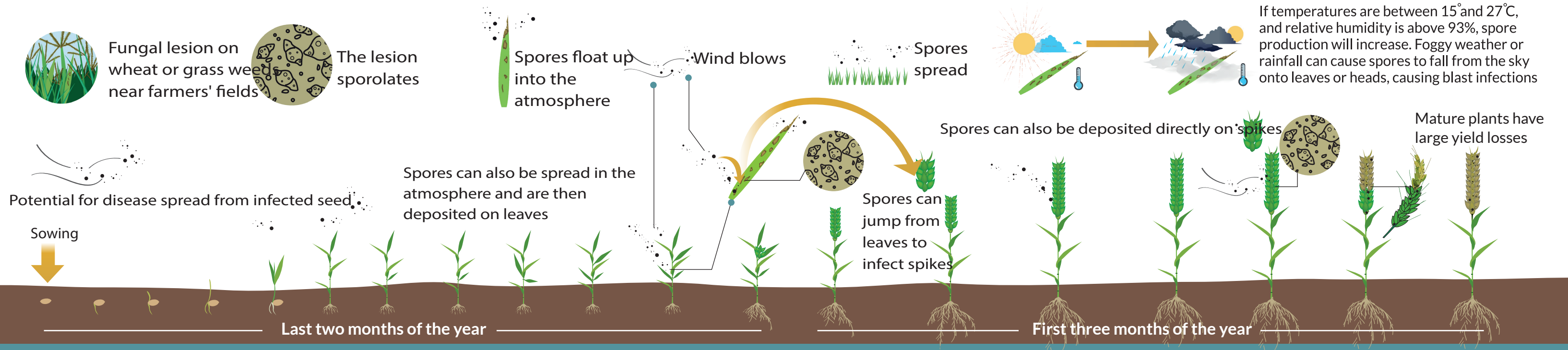
(*Magnaporthe oryzae* pathotype *triticum*)

is a devastating fungal disease that can significantly reduce wheat productivity in South Asia

## What does wheat blast look like?



# How does blast disease infect wheat crops?



## What can I do about wheat blast?

Cultural practices to provide a measure of protection against blast



Crop rotation



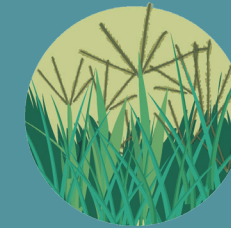
Use disease free seed of resistant varieties



Sow early



Spray fungicides if advised by extension services

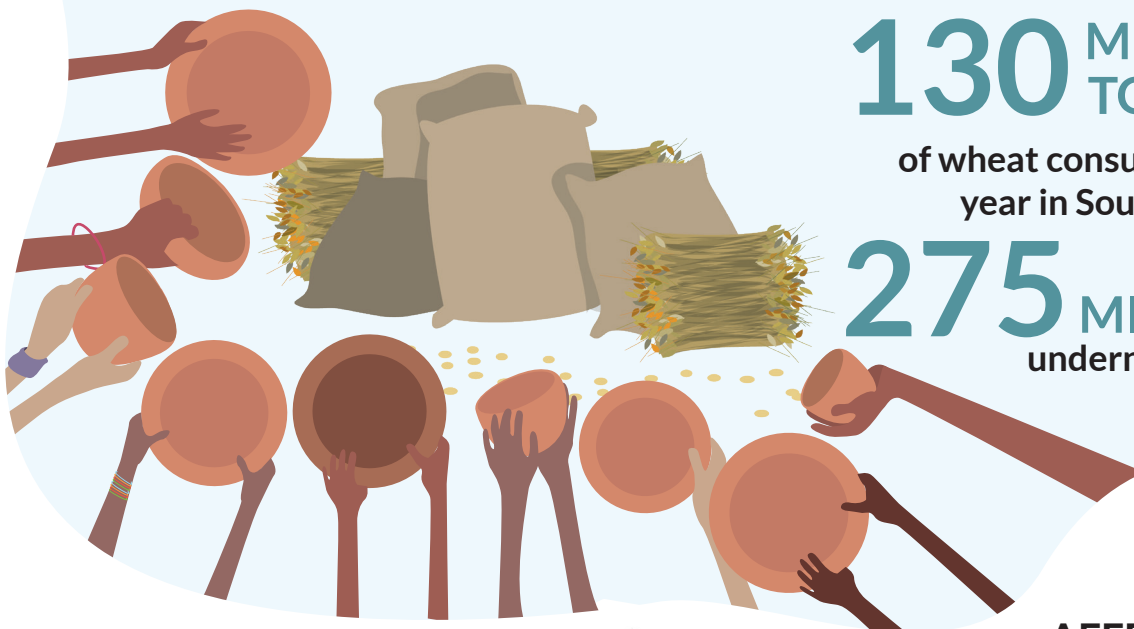


Remove grassy weeds



Do not replant seeds from a disease infected field

For more information: <https://repository.cimmyt.org/xmlui/bitstream/handle/10883/4740/57653.pdf>



**130** MILLION  
TONNES

of wheat consumed each  
year in South Asia by

**275** MILLION  
undernourished  
people

## FIRST OUTBREAK OF WHEAT BLAST

in Bangladesh was in February 2016

average yield loss was

**25 - 30%**



AFFECTED  
**15,000**  
HECTARES



## SCIENTISTS REMAIN CONCERNED THAT WHEAT BLAST COULD SPREAD ACROSS SOUTH ASIA

Researchers with the Cereal Systems Initiative for South Asia (CSISA) are partnering with the Bangladesh Wheat and Maize Research Institute (BWMRI) to work towards solutions to mitigate the threat of wheat blast for smallholder farmers

Funded by



**BILL & MELINDA  
GATES foundation**

Partners



**CIMMYT**  
International Maize and Wheat Improvement Center



**International Maize and  
Wheat Improvement  
Center (CIMMYT)**

House 10/B. Road 53.  
Gulshan-2. Dhaka, 1213,  
Bangladesh